



臺北市公園綠地系統 策略規劃 Strategic Planning of Taipei City Park System

Parks and Street Lights Office,
Public Works Department, Taipei City Government

Reporter : Tsaoi Yen-Lun Assistant Director

簡報大綱

Contents

- 一. 臺北市綠色基盤介紹
Green Infrastructure of Taipei
- 二. 臺北市公園綠地策略規劃
Strategic Planning of Taipei City Park System
- 三. 宜居城市-推動成果
Liveable City-Achievements
- 四. 未來展望-公園綠地躍升計畫
Prospect-Greening Taipei Leap Program

— Green Infrastructure of Taipei

Area of Taipei City: 271.8 km²

Area of Slope Land: 150 km² (account for 55% of Taipei City)

Mountain

- The basin is surrounded by mountains. Datun Mountain Range and Cising Mountain Range are **pyrogenic rocks**.
- Wujhih Mountain Range, Nangang Mountain Range and Erge Mountain Range are **sedimentary rocks**.

Waterway

- The stream system was completed from 30 to 60,000 years ago
- Xindianxi and Keelung Rivers gather to form Tamsui River, which is the source of the development of Taipei's settlements.

Wind

- Summer is mostly east wind and winter is northeast monsoon. Mainly from the Keelung River Valley into Taipei.
- Some of the suburban areas are guided by the terrain, and it turns northeast wind.

Greenery

- The Taipei Basin has a heterogeneous, diverse and rich ecology and vegetation.



— Green Infrastructure of Taipei

1. Multiple Green Resources

► National Parks

► Slope land

► Parks and Green Spaces

- Parks
- Greenland
- Playground
- Plaza
- Riverside Park

Green Resources per capita

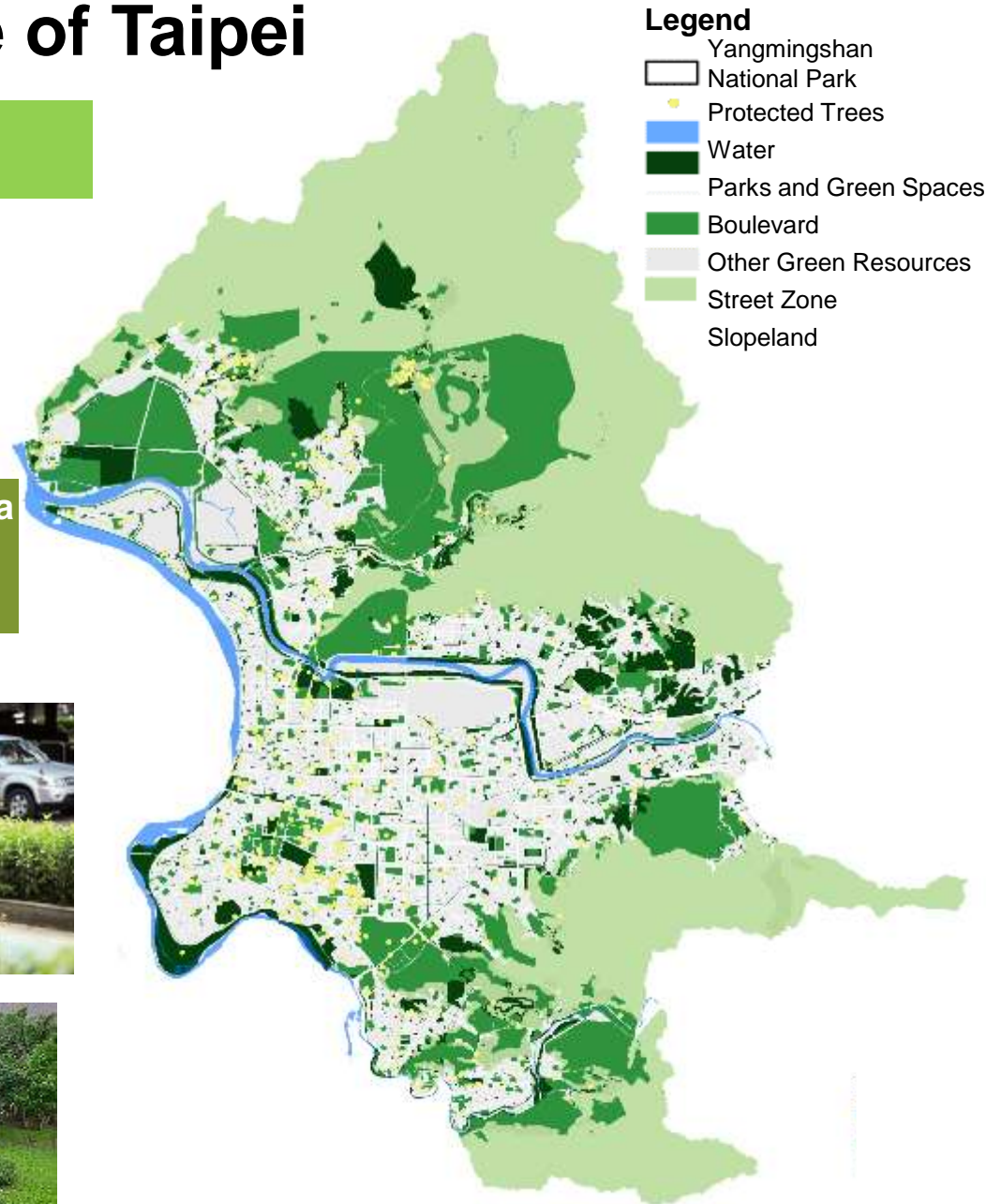
52.37 m^2

(~2017.12)

► Reserve

► Scenic area

► Boulevard



0 1 2 3 4 5 6 7 8 9 10

Multiple Green Resources in Taipei City

— Green Infrastructure of Taipei

2. Urban Planning Division

- ▶ Parks
- ▶ Greenland
- ▶ Plaza
- ▶ Playground
- ▶ Riverside Park

Parks and Green Spaces
per capita

5.36 m²

3. Built Condition of Parks

Built Condition	Quantity	Area
Built	828	14,370,904
Partially Built	44	
Unbuilt	203	6,909,750
Total	1075	21,280,654



Legend

- Riverside park
- Parks, greenland, palza and playground

— Green Infrastructure of Taipei

4. Taipei City Street Trees are scattered throughout the city

► 39 Boulevards



Dunhua S. Rd, Keelung Rd



Dunhua S. Rd



Sanmin Ring



Xinyi Rd



二. Strategic Planning of Taipei City Park System

1. Issue and Strategy



Green Resources

Lack of overall planning
Urban Planning Division
leads the division of
parks

Urban Disaster Prevention

Maintain sensitive areas
Facing a "complex" disaster

Resilient Hydrological Environment

Urban heavy rainfall
Water retention and
storm management

Green Living

Parks don't reflect the cultural
connotation of the natives
Planning and design for
different needs

Urban Heat Island

Urban Heat Island
Effect

Administrative Management

Integration of data and
adaption
Strengthen the park
management system



The planning direction of "integration" and "multifaceted"

= 1

2. Planning Structure



- 1) Under the climate change, the challenge of ecological environment is the big issue**
- 2) Responding to the needs of the public and professional sectors**
- 3) Parks are the connecting living spaces**



二. Strategic Planning of Taipei City Park System

3. Formative Steps of Park Sytem Vision

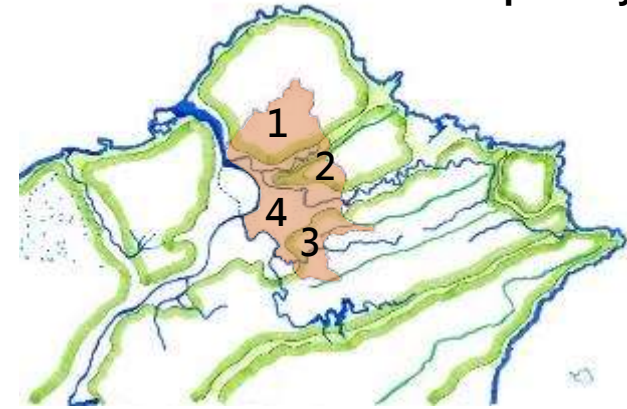
Step1_

The Nature of Northern Taiwan



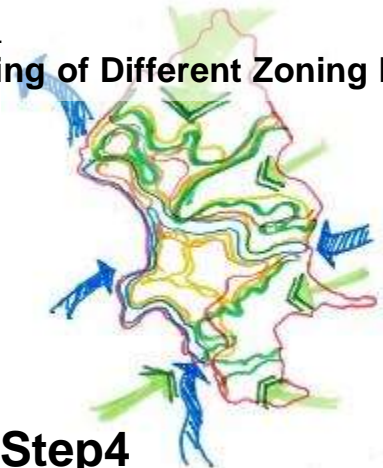
Step2_

Environmental Position of Taipei City



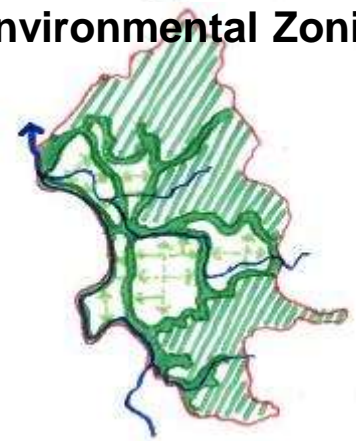
Step3_

Overlapping of Different Zoning Issues



Step4_

Environmental Zoning



二. Strategic Planning of Taipei City Park System

4. Environmental Zoning Operation-Geographic Information System(GIS)

Protected Area
related to Ecology

**Green
Resources
Diversity**

Normalized Difference
Vegetation Index
(NDVI)

Surface
Temperature

**Heat Island
Effect**



The types for
different
environmental issues
set the principle of
zoning

Terrain Slope

**Urban Disaster
Prevention**

Landslide and
Geological Disaster

Flood
Potential

**Resilient
Hydrological
Environment**

Urban
Drainage



二. Strategic Planning of Taipei City Park System



5. Build 9 Environmental Districts

Preservations and Rehabilitation

- 1. Mt. Datun and Mt. Qixing
- 2. Mt. Wuzhi
- 3. Mt. Nangang and Mt. Erge
- 4. Guandu, Shezi and Tamsui River

Extensions and Linkage

- 5. Shilin and Beitou District
- 6. Zhongshan and Neihu District
- 7. Nangang and Xinyi District
- 8. Wenshan District

Multiple Boundaries

Network

- 9. Built environment

二. Strategic Planning of Taipei City Park System



6. The Concept of Preservations and Rehabilitation

- Parks above 20 hectares are the primary matrix of preservations and rehabilitation
- Parks above 10 hectares are the secondary matrix of preservations and rehabilitation

二. Strategic Planning of Taipei City Park System

7. Extensions and Linkage → Network

The Basis of Green Network

Green Resources

- 1) Existing 39 boulevards
- 2) Roads with street trees

Geography

- 3) Waterway

Human-oriented Traffic

- 4) The width of roads

Land Nature

- 5) The characteristic of every district

Legend

- Roads with street trees
- Waterway and drainage system
- Rivers
- Slopeland

二. Strategic Planning of Taipei City Park System

8. 6 Planning Strategy



三. Liveable City-Achievements

1. Rainwater Tank Project

Achievements

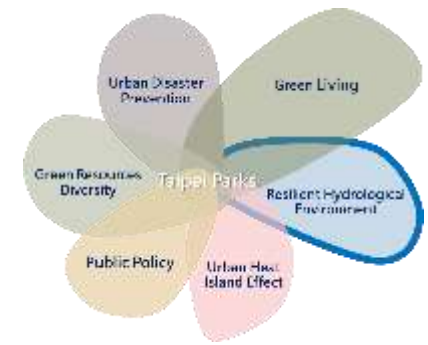
- ▶ 19 parks
- ▶ Total area of rainwater tank: 1.75 ha
- ▶ Storage Capacity: 1209.83 ton

Future Goal(2022)

- ▶ Storage Capacity: 2202.43 ton



Waterwheel watering



≡ Liveable City-Achievements

2. Permeable Pavement Project

Achievements

- ▶ 54 parks
- ▶ Total area of permeable pavement: 4.98 ha

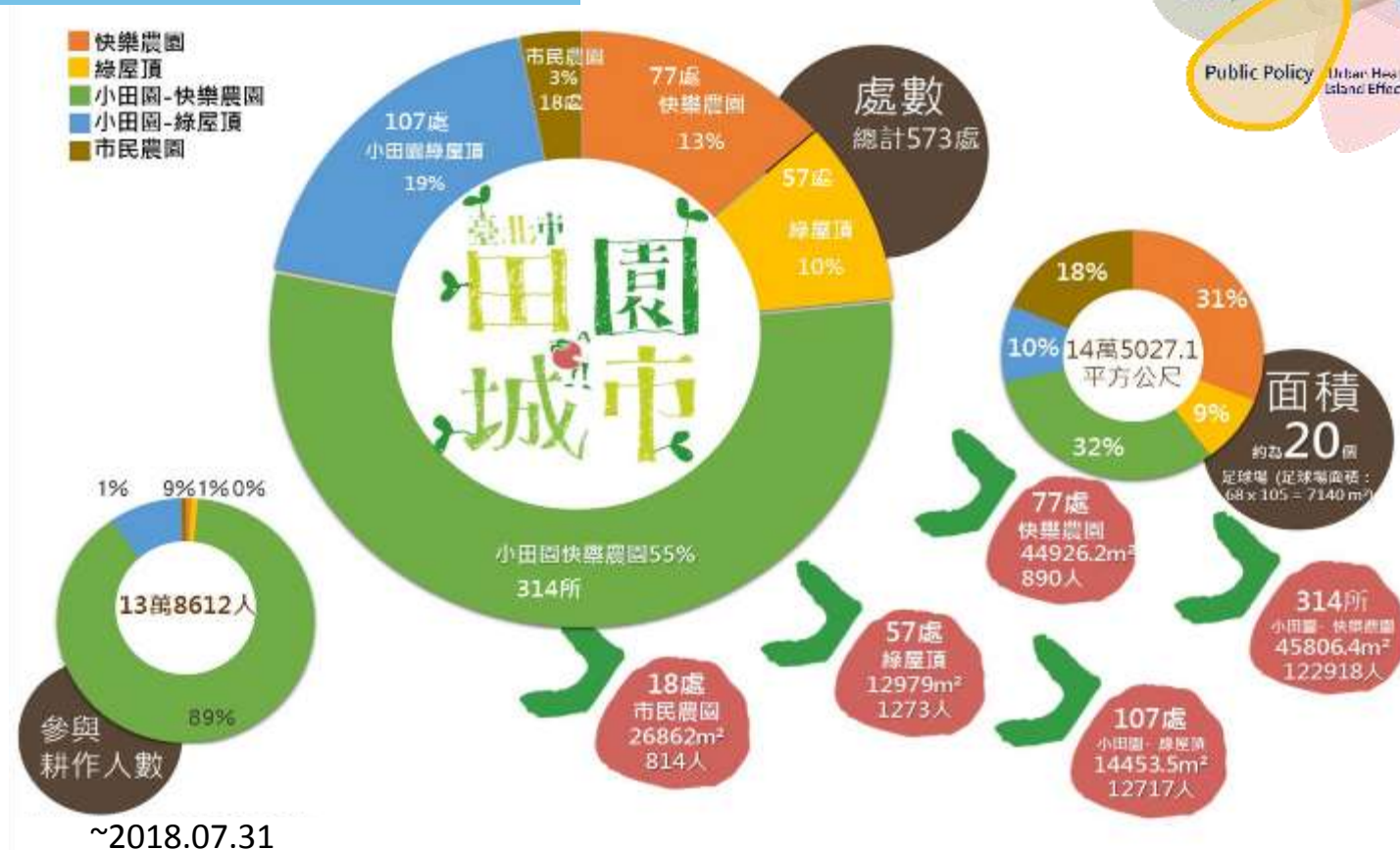
Future Goal(2022)

- ▶ Total area of permeable pavement: 11.78 ha



三. Liveable City-Achievements

3. Garden City



三. Liveable City-Achievements

4. Park Ecologicalization- One Ecological Park in One District

► Important contribution

- 1) Let park users turn into park ecological guardians.
- 2) Combine NGO groups and local community residents to promote ecological recovery and conservation concepts.
- 3) Create a diverse habitat environment.

► Continue to promote ecological conservation work

- 1) Local volunteer training and the adoption of parks.
- 2) Establish an ecological database and a park ecological census.



The version of
“One Ecological Park in One District”

三. Liveable City-Achievements

4. Park Ecologicalization- One Ecological Park in One District

Achievement 1: Firefly Recovery

Progress

- Since 2014, it has started to work with non-governmental organizations to plan park ecological pools.
- In 2017, it gained the right to host the International Firefly Annual Conference.
- In 2018, the Firefly Season was held to promote the importance of its habitat.



Sara Lewis, known as the firefly godmother, said in her Facebook "Taiwan has taken a leading position in the world for firefly conservation work. Through the efforts of Taiwanese researchers, the participation of government agencies and non-governmental organizations, it has achieved amazing results.

三. Liveable City-Achievements

4. Park Ecologicalization- One Ecological Park in One District

Achievement 2: 大灣草圳

Combining the resilience of urban, natural ecology, environmental education, five senses of healing, and healthy living, the innovative design case reshapes the humanistic ecological landscape of Daan Forest Park and the long-term goal of sustainable ecology.

■ Progress

- 1) The first phase of 「臺北健森房」活水飛輪 completed in June 2018.
- 2) The second phase of 「水幫浦音樂療癒花園」 expected to started in August 2018, finished at the end of 2018.



Construction Area: 3,185m²
Rainwater Tank Storage: 100 ton



大灣草圳規劃圖



三. Liveable City-Achievements

5. Wetland Parks in Taipei

- Nangang 202 Arsenal and Periphery Wetland (Local level)
- Guandu Nature Park (Danshuei River Drainage Wetlands)
- Zhoumei Xianzaigang Park
- SIN SIN Wetland Park
- Yong Chun Pi Wetland Park
- Shezi Daotou Park



Guandu Nature Park



SIN SIN Wetland Park



Guandu Nature Park



四. Prospect-Greening Taipei Leap Program

Goal 1- Quality Improvement of Parks

Renovation of Built Parks

Renovate 26 parks /


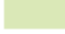

Upgrade 67 ha

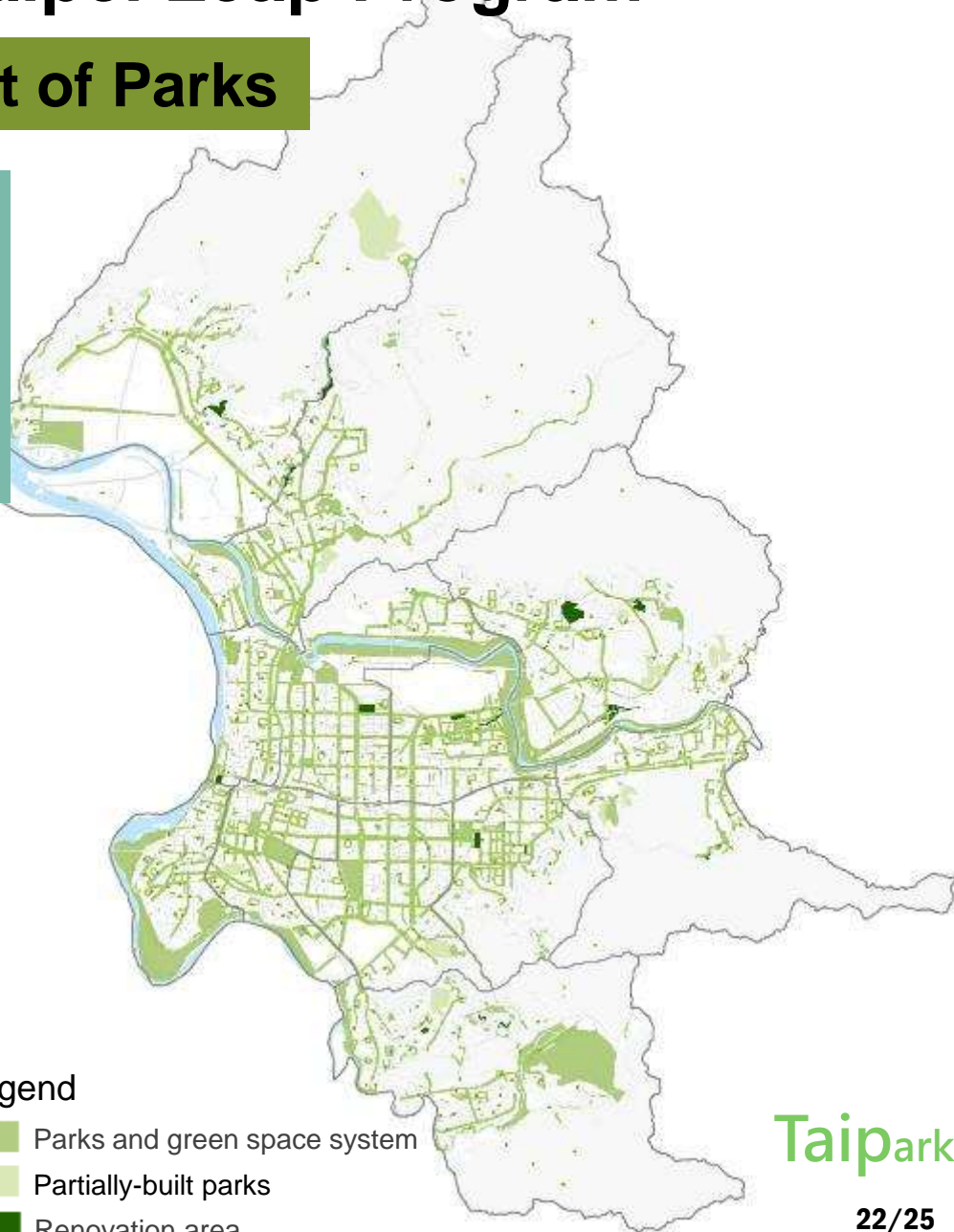


**Upgrade
4.63%**



Legend

-  Parks and green space system
-  Partially-built parks
-  Renovation area



Taipark

四. Prospect-Greening Taipei Leap Program

Goal 2 - Quantity Improvement of Parks

Goal 3 - Meet the basic requirements
Accessibility Improvement

Improve the accessibility to all
Taipei City parks to 300m

- + Newly-built 31 Parks
- + Unused Land
220 / Upgrade 4.67 ha

89.96%



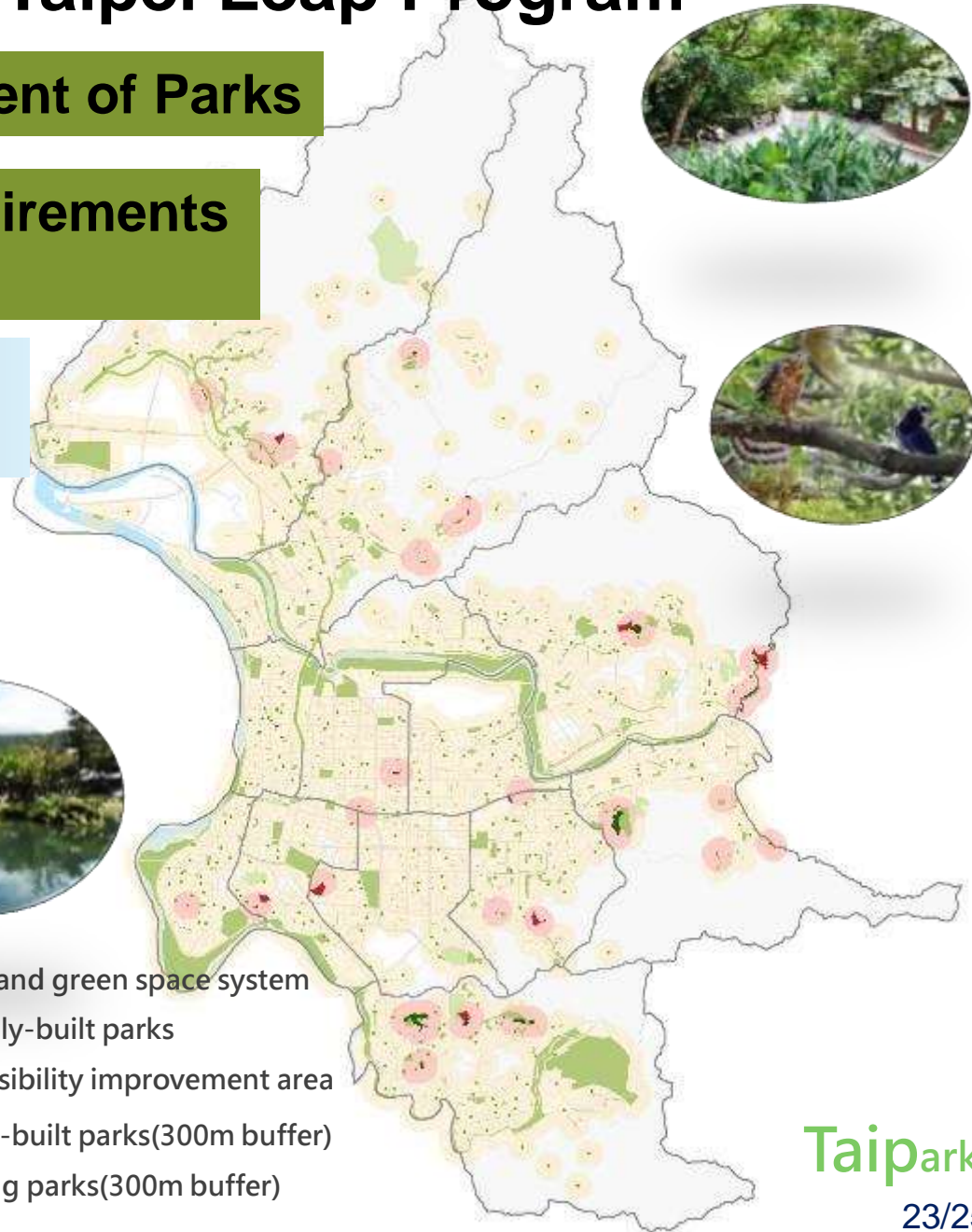
88.13%

Accessibility to
Parks and Green Spaces



Legend

- Parks and green space system
- Partially-built parks
- Accessibility improvement area
- Newly-built parks(300m buffer)
- Existing parks(300m buffer)



Taipark

四. Prospect-Greening Taipei Leap Program

Goal 4 –Boulevard Improvement

Add 12
Boulevards

Short-term Target:
Add 1 Boulevard to 1
District
 $39+12 = 51$



Legend Road condition

- Add 1 Boulevard to 1 District
- Good condition
- Need to improve
- Parks and green space system
- Partially-built parks
- Accessibility improvement area
- Newly-built parks(300m buffer)
- Unused land(300m buffer)
- Existing parks(300m buffer)

行政區	指認林蔭大道
松山區	復興北路
信義區	光復南路
中山區	中山北路一至六段
大安區	愛國東路
中正區	凱達格蘭大道
大同區	承德路
文山區	秀明路
萬華區	西園路二段
南港區	市民大道六至七段
內湖區	港墘路
士林區	忠誠路
北投區	大業路



Thank you for listening.